



MONTHLY MEMBERSHIP PROGRESS REPORT

District A 5

Results as of: 01/31/2018

GMT: CHRIS LEWIS

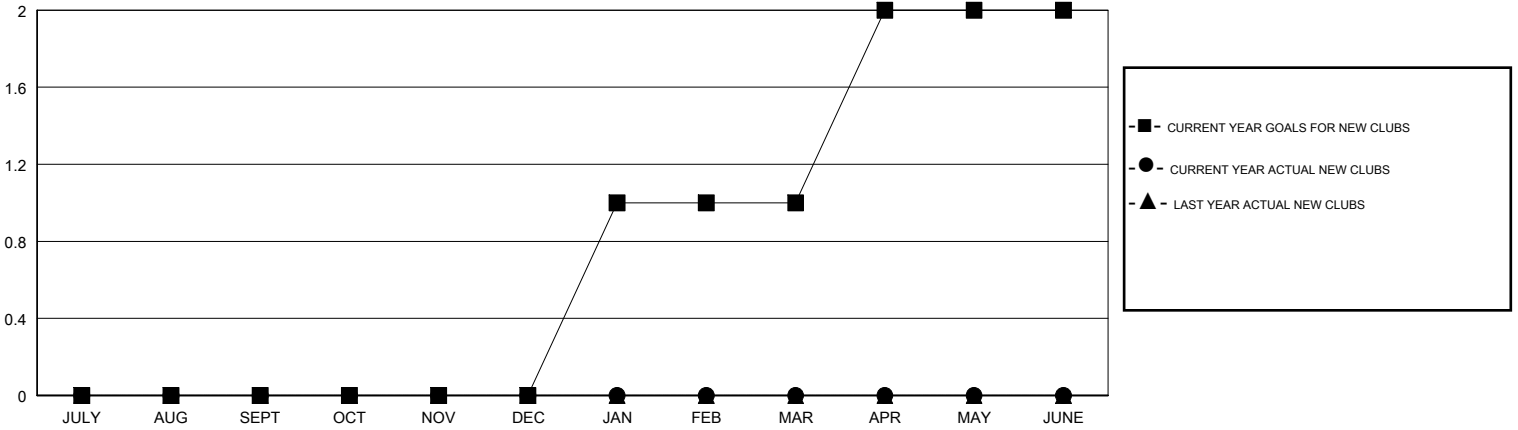
LOCATION ONTARIO

GMT CA

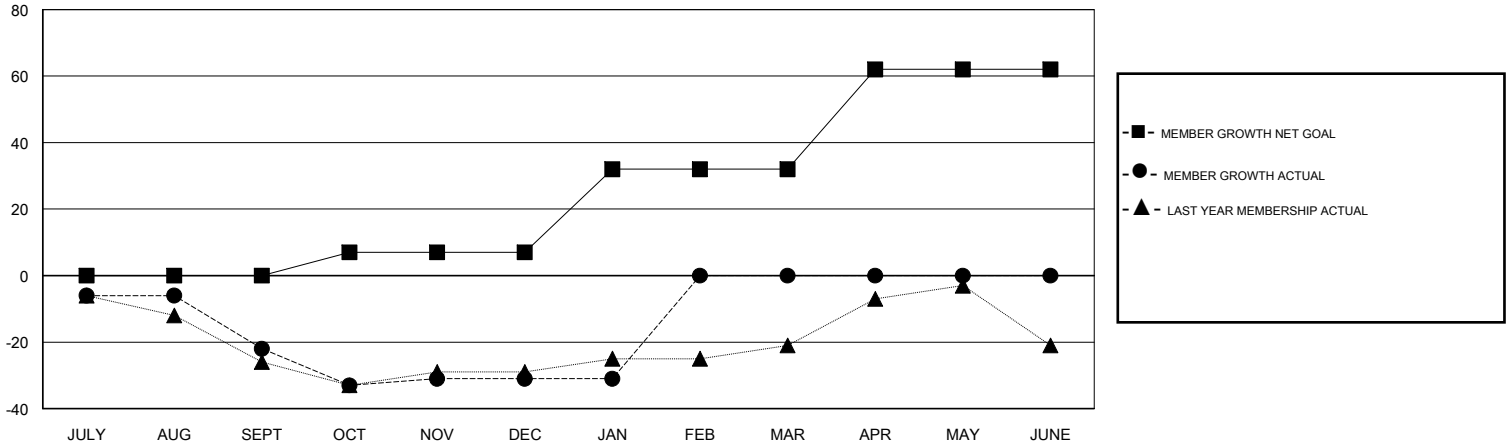
Clubs			
RESULTS FOR 2017-2018			
QUARTER	NEW CLUB GOAL	NEW CLUBS	DROPPED CLUBS
JULY/AUG/SEPT	0	0	0
OCT/NOV/DEC	0	0	0
JAN/FEB/MAR	1	0	0
APR/MAY/JUNE	1	0	0

Members			
RESULTS FOR 2017-2018			
QUARTER	MEMBER GROWTH NET GOAL	MEMBER GROWTH ACTUAL	DROPPED MEMBERS ACTUAL (including transfers)
JULY/AUG/SEPT	0	11	30
OCT/NOV/DEC	7	26	29
JAN/FEB/MAR	25	16	14
APR/MAY/JUNE	30	0	0

GOALS AND ACTUAL NEW CLUBS CUMULATIVE



GOALS AND ACTUAL MEMBERS CUMULATIVE



DROPPED CLUBS: 0

24 CLUBS OF 53 ADDED 1 OR MORE NEW MEMBERS

GENDER DISTRIBUTION	
MALE	719 (58.65%)
FEMALE	507 (41.35%)
Women Percentage Fiscal Year Goal: 30%	

DROPPED MEMBERS	
DECEASED	14
CLUB CANCELLED	0
OTHER	59
TOTAL	73

[CLICK HERE FOR CUMULATIVE MEMBERSHIP DATA](#)

TOTAL FAMILY UNIT MEMBERS	234
FAMILY MEMBERS PAYING HALF DUES	118